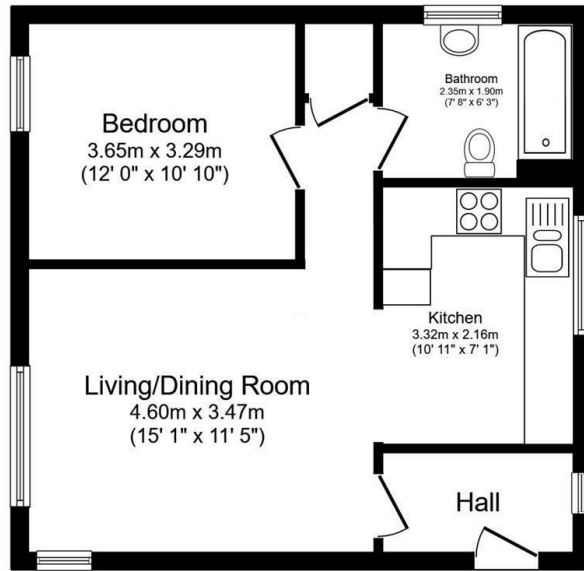




## Flat 4, Kingsley Court Oxford Road, Kidlington, OX5 1EB

£1,200 - 23rd May 2026.

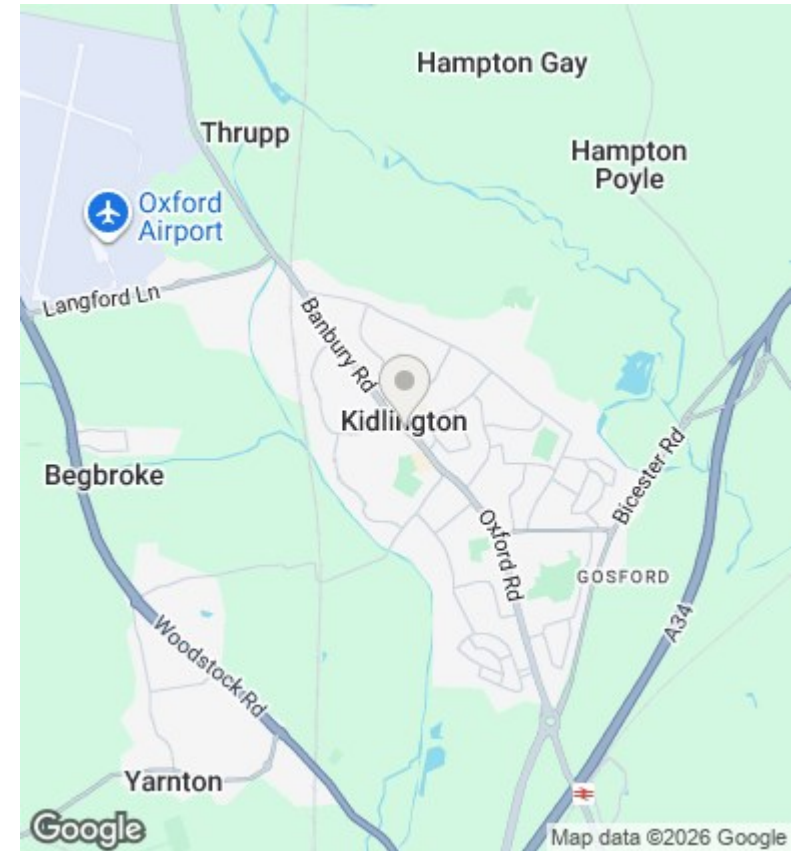
- First floor maisonette
- Kitchen appliances
- Communal gardens
- Mains gas electricity and water
- One bedroom
- Gas CH
- EPC rating C
- Part furnished (bed, wardrobe non maintained)
- Parking for 1 car
- Council tax band C



**Floor Plan**  
Floor area 43.3 sq.m. (466 sq.ft.)

Total floor area: 43.3 sq.m. (466 sq.ft.)

This floor plan is for illustrative purposes only. It is not drawn to scale. Any measurements, floor areas (including any total floor area), openings and orientations are approximate. No details are guaranteed, they cannot be relied upon for any purpose and do not form any part of any agreement. No liability is taken for any error, omission or misstatement. A party must rely upon its own inspection(s). Powered by www.Propertybox.io



## Directions

## Viewings

Viewings by arrangement only. Call 01865 515900 to make an appointment.

## Council Tax Band

C

## EPC Rating:

C

| Energy Efficiency Rating                           |  | Current                 | Potential |
|--|--|-------------------------|-----------|
| <i>Very energy efficient - lower running costs</i> |  |                         |           |
| (92 plus) <b>A</b>                                 |  |                         |           |
| (81-91) <b>B</b>                                   |  |                         |           |
| (69-80) <b>C</b>                                   |  | 69                      | 76        |
| (55-68) <b>D</b>                                   |  |                         |           |
| (39-54) <b>E</b>                                   |  |                         |           |
| (21-38) <b>F</b>                                   |  |                         |           |
| (1-20) <b>G</b>                                    |  |                         |           |
| <i>Not energy efficient - higher running costs</i> |  |                         |           |
| <b>England &amp; Wales</b>                         |  | EU Directive 2002/91/EC |           |